



1. Remove stretch fabric graphic and plastic top cover from case.



2. Remove any other items from case you might need. Items inside case will not be accessible after cover is installed.



3. Close and latch the shipping case.



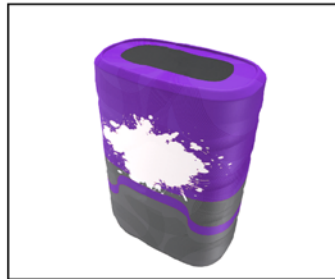
4. Start feeding the fabric graphic onto case from the top. Make sure front of graphic is oriented to latch side of case.



5. Carefully slide fabric graphic wrap onto hardware.



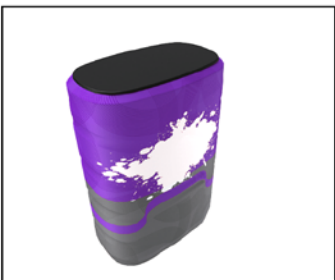
6. Align the seam on the back of the graphic with the center of the back side of the case.



7. Make sure all wrinkles are smoothed out and the fabric looks straight.



8. Place the plastic top cover on top of the case and press down firmly to secure.



9. Enjoy!

